

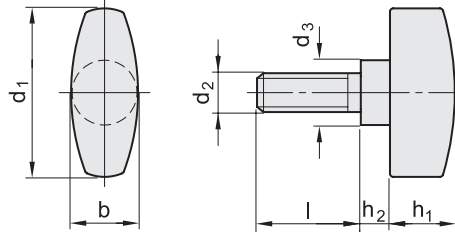
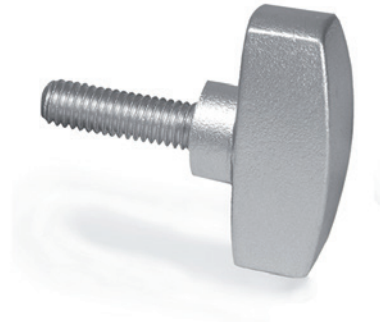
- 1
- 2
- 3
- 4
- 5
- 6
- 7
- 8
- 9
- 10
- 11
- 12
- 13
- 14
- 15
- 16
- 17
- 18
- 19

STANDARD EXECUTIONS

Cast AISI CF-8 stainless steel, sandblasted matte finish.

FEATURES AND APPLICATIONS

These wing knobs allow high tightening torque values and a comfortable grip, thanks to the elongated hub.



INOX STAINLESS STEEL

Code	Description	d1	d2	d3	b	h1	h2	l	⚖️
GN.18693	GN 433-NI-20-M4-6-MT	20	M 4	8	9	8	3.5	6	18
GN.18695	GN 433-NI-20-M4-10-MT	20	M 4	8	9	8	3.5	10	19
GN.29453	GN 433-NI-26-M5-10-MT	26	M 5	10	11	10	4.5	10	20
GN.29454	GN 433-NI-26-M5-16-MT	26	M 5	10	11	10	4.5	16	23
GN.29455	GN 433-NI-26-M6-16-MT	26	M 6	10	11	10	4.5	16	24
GN.29456	GN 433-NI-26-M6-20-MT	26	M 6	10	11	10	4.5	20	24
GN.29457	GN 433-NI-26-M6-25-MT	26	M 6	10	11	10	4.5	25	25
GN.18697	GN 433-NI-34-M6-16-MT	34	M 6	12	13	12	5	16	39
GN.29475	GN 433-NI-34-M6-20-MT	34	M 6	12	13	12	5	20	41
GN.29476	GN 433-NI-34-M6-25-MT	34	M 6	12	13	12	5	25	42
GN.29477	GN 433-NI-34-M6-30-MT	34	M 6	12	13	12	5	30	44
GN.29478	GN 433-NI-34-M8-16-MT	34	M 8	12	13	12	5	16	42
GN.29479	GN 433-NI-34-M8-20-MT	34	M 8	12	13	12	5	20	43
GN.18699	GN 433-NI-34-M8-25-MT	34	M 8	12	13	12	5	25	45
GN.29480	GN 433-NI-34-M8-30-MT	34	M 8	12	13	12	5	30	48

Clamping elements